

SKATE

TASK | DRAUGHTSMAN | TRAINING



COMFORT



3

SKATE CONTENTS



TASK 4
DRAUGHTSMAN 6
TRAINING 8
MODELS & OPTIONS 10
UPHOLSTERY 12
TECHSPEC 14
DIMENSIONS 15





SKATE TASK

OVERVIEW:

Designed for simplicity, Skate delivers functionality without fuss. Concealed, pictorial levers control the dynamic movement and height adjustment, while lumbar comfort can be adapted to suit. An optional inflatable lumbar feature can be added for increased support. The Skate Task chair offers comfort and style, and is an ingenious addition to the Comfort seating collection.

With intuitive buttons, it's easy to tailor the chair to suit most anthropometric measurements. The dynamic movement encourages blood flow and in turn, increased concentration and productivity, improving the wellbeing of the user.

The Skate Task is made from 81% recycled material, has Greenguard Gold Indoor Air Quality Certification and is 96% recyclable.

FEATURES:

ALUMINIUM ARM SUPPORTS

INTEGRATED LEVER CONTROLS

WATERFALL FRONT SEAT

AUTOMATIC OR INFLATABLE LUMBAR SUPPORT

HEIGHT AND ANGLE ARMREST ADJUSTMENTS

SOFT TOUCH ARM PADS

OPTIONAL AUTO-RETURN FEATURE
(FOR MEETING OR CONFERENCE USE)

CHOICE OF FOUR BASES

TWO FRAME FINISHES

ALL PARTS OF THE CHAIR ARE REPLACEABLE AND KEPT IN STOCK FOR LONGER LIFE-CYCLE

Build your own unique Skate Task chair using a combination of mesh, fabric and leather finishes at comfort.global/create





SKATE DRAUGHTSMAN

OVERVIEW:

Skate draughtsman has been designed to fill a void in the chair market for comfortable and flexible high-level seating. The ideal chair for environments where a raised seating solution is required – such as reception desks, raised workstations, lab settings, industrial working environments and office healthcare. An ideal sit-stand chair for agile working.

The Skate Draughtsman's cutting-edge, set back wing arm is designed for the practicalities of raised seating. This aluminium fixed arm offers ease of seat access, delivering maximum seating comfort with excellent freedom of movement.

The unique footplate has been designed not only for its good looks but also for health and safety considerations. Unlike traditional footings, the Skate footplate reduces risk of the user's feet catching.

Skate Draughtsman meets EN 1335 standards, is 96% recyclable and has Greenguard Gold Certification.

FEATURES:

ALUMINIUM ARM SUPPORTS

INTEGRATED LEVER CONTROLS

WATERFALL FRONT SEAT

AUTOMATIC OR INFLATABLE LUMBAR SUPPORT

SET-BACK WING ARMS

CHOICE OF FOUR BASES

TWO FRAME FINISHES

CO-ORDINATED FOOTPLATE - DESIGNED TO MATCH ZB RANGE OF MESH

ALL PARTS OF THE CHAIR ARE REPLACEABLE AND KEPT IN STOCK FOR LONGER LIFE-CYCLE

Build your own unique Skate Draughtsman's chair using a combination of mesh, fabric and leather finishes at [comfort.global/create](https://www.comfort.global/create)





SKATE TRAINING

OVERVIEW:

Skate Training chair is the ideal solution for 21st century learning and agile working. Breathable mesh promotes healthier posture for greater support and comfort. This is combined with practical, built-in storage for bags and documents, a sturdy and adjustable tablet with park mode, a bottle holder, and colour co-ordinated castors for ease of mobility. The Skate Training chair has it all.

Designed specifically for education and training environments where endurance is demanded, Skate Training is also available in a wide range of finishes and colours. With a wealth of optional extras, Skate Training allows complete customisation.

Using up to 52% recycled material, it also boasts 97% recyclability, has Greenguard Gold Certification and meets BS EN 1729-2:2012 (Size 4-7).

FEATURES:

ADJUSTABLE TABLET

ERGONOMIC ADJUSTABLE LUMBER SUPPORT

OPTIONAL PUMP-UP LUMBAR SUPPORT

AUTO-FLEX BACK

WATERFALL FRONT SEAT

INTEGRATED BAG STORAGE UNDER SEAT

OPTIONAL CUPHOLDER

CHOICE OF SEAT FRAME FINISHES

CHOICE OF COLOUR-COORDINATED BASE

INSETS AND CASTORS

ALL PARTS OF THE CHAIR ARE REPLACEABLE AND KEPT IN STOCK FOR LONGER LIFE-CYCLE

Build your own unique Skate Training chair using a combination of mesh, fabric and leather finishes at comfort.global/create

SKATE MODELS & OPTIONS

An extensive selection of soft and durable mesh, leather and fabric upholstery offers a variety of colour combinations to suit any environment. This stylish chair delivers outstanding comfort and innovation – the perfect example of form and function in harmony.

For complementary visitor seating, see Comfort Europe's Lii visitor chair.

MODELS



TRAINING



DRAUGHTSMAN



TASK

TASK / DRAUGHTSMAN BASE OPTIONS



POLISHED



PAINTED WHITE



PAINTED BLACK



NYLON



CASTORS

NOT SUITABLE FOR DRAUGHTSMAN MODEL



POLISHED GLIDES



BLACK GLIDES

UPHOLSTERY OPTIONS

FRAME OPTIONS



DRAUGHTSMAN / TRAINING ACCESSORIES



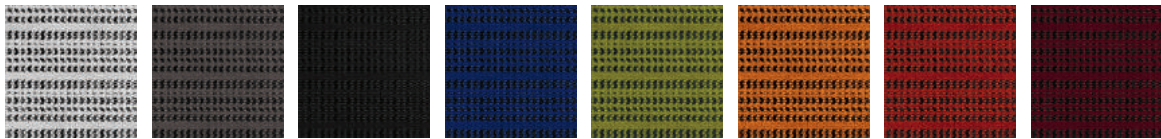
Other combinations are available.

Build and download your own design using our chair configurator at www.comfort.global/create

SKATE UPHOLSTERY

Comfort are passionate about using mesh on our chairs due to their durability and ergonomic properties. In addition, we have selected a range of complementary leathers and fabrics to mix-and-match. Should you wish to upholster in an alternative material, we work with all the leading contract fabric suppliers and can advise of suitability – non stock items will increase lead times.

KMD MESH



WHITE
KMD36

GREY
KMD30

BLACK
KMD31

BLUE
KMD35

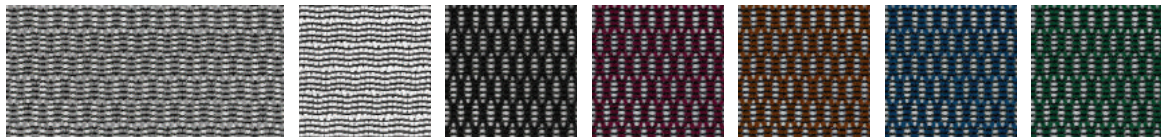
GREEN
KMD34

ORANGE
KMD33

RED
KMD32

BURGUNDY
KMD37

W MESH



SILVER
W09-53

WHITE
W09-24

BLACK
W09-01

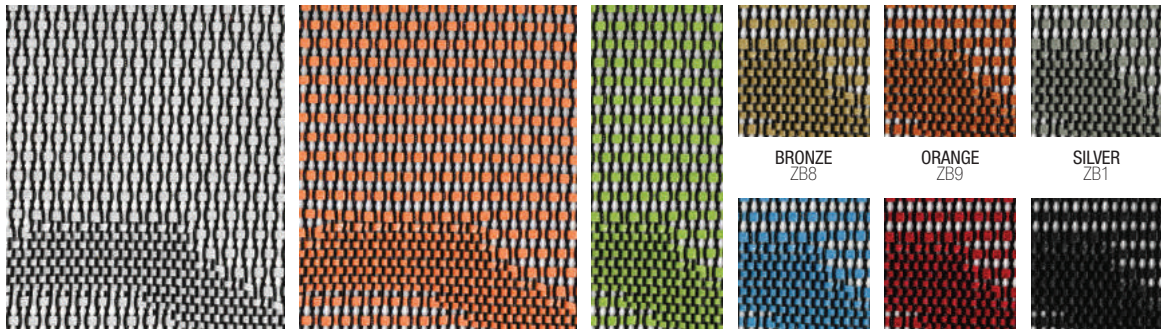
GRAPE
W09-10

CHESTNUT
W09-51

BLUE
W09-18

FOREST GREEN
W09-19

ZB MESH



WHITE
ZB7

TANGERINE
ZB4

HERBAL GREEN
ZB3

BRONZE
ZB8

ORANGE
ZB9

SILVER
ZB1

SKY BLUE
ZB5

RED
ZB6

BLACK
ZB2

LEATHER (SEAT ONLY)



LIGHT TAN
LE3902

LATTE
LE7810

DARK BROWN
LE8213

RED
LE3310

ORANGE
LEH007

BLACK
LE2095

SNOW
LEA2

HUNTER GREEN
LE197

TEAL
LE196

HEATHER
LE1118

DARK BLUE
LE70091

CAMIRA XTREME (SEAT ONLY)



SKATE TECHSPEC

GREEN CREDENTIALS

GREENGUARD CERTIFICATION

GREENGUARD Certification standards have established performance-based standards to define products and processes with low chemical and particle emissions for use indoors.

RECYCLABILITY

MATERIAL ANALYSIS

- PLASTIC
- ALUMINIUM ALLOY
- STEEL
- UPHOLSTERY
- PU / FOAM

RECYCLED MATERIAL TOTAL

CERTIFICATION

- BS EN 1729-2:2012 (Size 4~7).
- EN 1335-1:2000
- EN 1335-2:2009
- EN 1335-3:2009

TASK

DRAUGHTSMAN

TRAINING

GOLD

GOLD

GOLD

96%

96%

97%

CONTENT	RECYCLED
82%	90%
-	-
8.4%	80%
4.7%	-
4.9%	-

CONTENT	RECYCLED
82%	90%
-	-
8.4%	80%
4.7%	-
4.9%	-

CONTENT	RECYCLED
50.6%	90%
41.8%	10%
2.6%	80%
1.9%	-
3.1%	-

81%

81%

52%

- YES
- YES
- YES

YES

SKATE TASK DIMENSIONS



- mm
- A 480
 - B 425 - 410
 - C 460
 - D 510
 - E 490
 - F -
 - G 650

SKATE DRAUGHTSMAN DIMENSIONS



	mm
A	480
B	500 - 690
C	490
D	510
E	490
F	-
G	635

SKATE TRAINING DIMENSIONS



	mm
A	480
B	360
C	520
D	520
E	490
F	-
G	570

CHOOSE

Using over 35,000 images, Comfort's configurator provides an app allowing you to view our chair ranges and create the specification of your choosing.

CUSTOMISE

Choose from a wide range of frame finishes, bases, upholstery options & colours, and accessories to create your own, unique chair.

DOWNLOAD

Featuring high resolution image downloads suitable for printed literature – simply configure your chair then select the download format options and size you require.

GET STARTED AT WWW.COMFORT.GLOBAL/CREATE

DESIGNED BY YOU | CREATED BY COMFORT



COMFORT EUROPE HQ

Riverbank Mill,
2 Stoneygate Road,
Newmilns, Ayrshire,
United Kingdom, KA16 9AJ
T +44 (0)1560 324440
E hello@comfort.global

www.comfort.global

